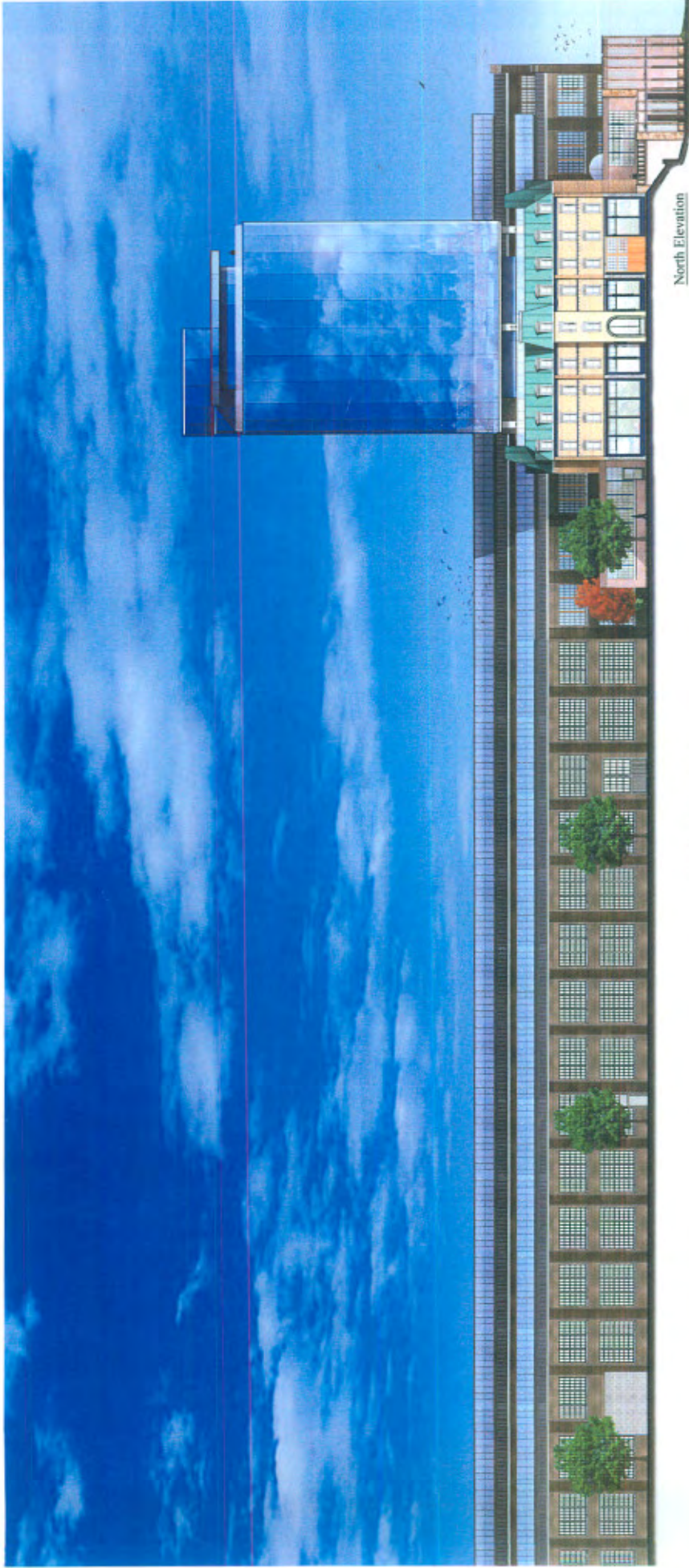


East Elevation
2023.03.15

CNR Centre
Residence Inn & Condominiums
Stratford, Ontario

G.M. DEHART ARCHITECT INC.
4400 SHEPPARD AVENUE EAST
UNIT 203 SCARBOROUGH, ONTARIO, M1S 1T7
TEL: (416) 736-7775 FAX: (416) 736-3330



North Elevation
Scale 1/16"

CNR Centre
Residence Inn & Condominiums
Stratford, Ontario

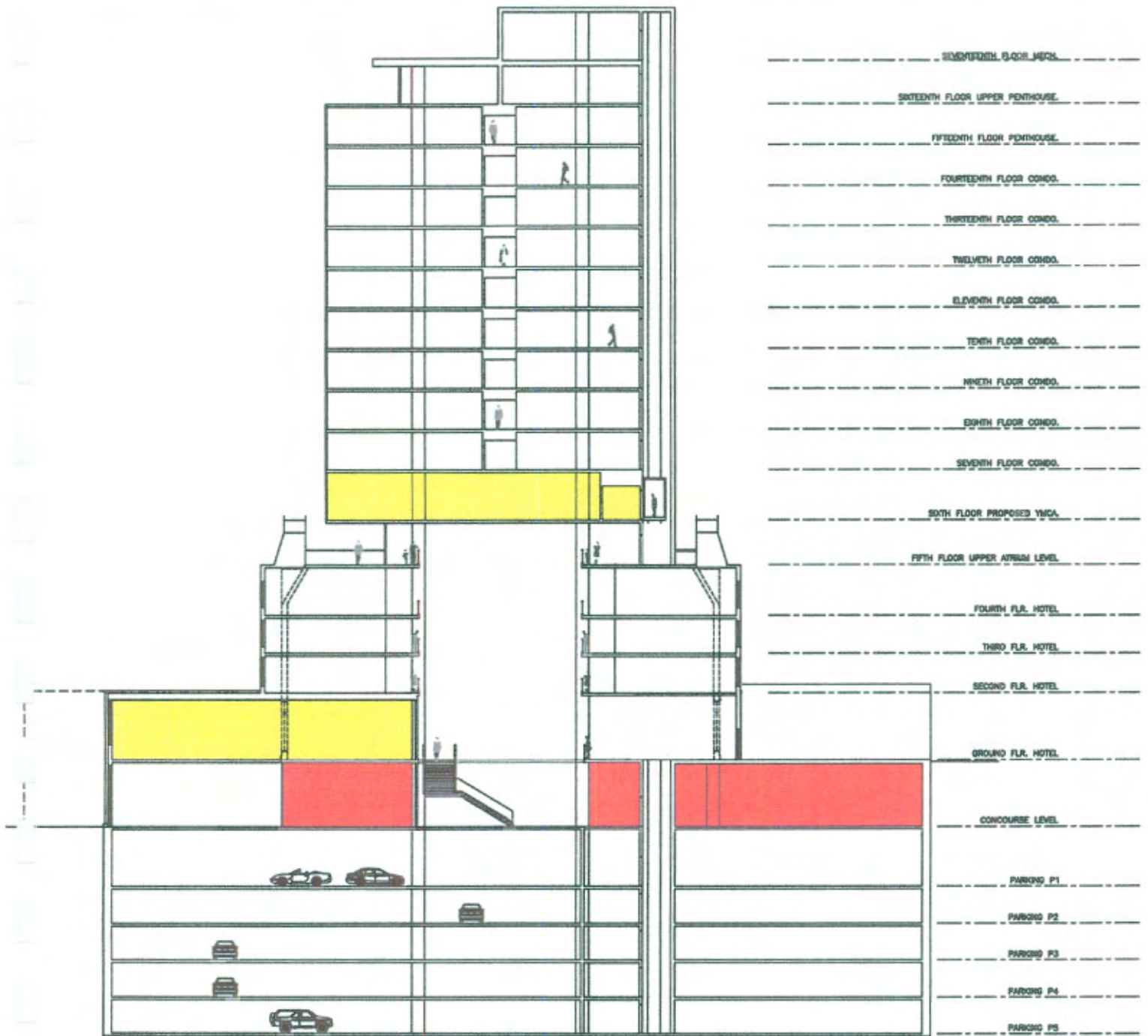
CALL FOR MORE INFORMATION
OR VISIT US AT www.cnrcentre.com
OR CONTACT US AT 1-800-363-3636



West Elevation
Scale 1/8" = 1'-0"

CNR Centre
Residence Inn & Condominiums
Stratford, Ontario

CLUB DESIGNER ARCHITECTURE INC.
ARCHITECTS AND INTERIORS
100 UNIVERSITY AVENUE, SUITE 200
STRATFORD, ONTARIO N5A 1C8
TEL: 519-771-1100 FAX: 519-771-1101



CROSS SECTION

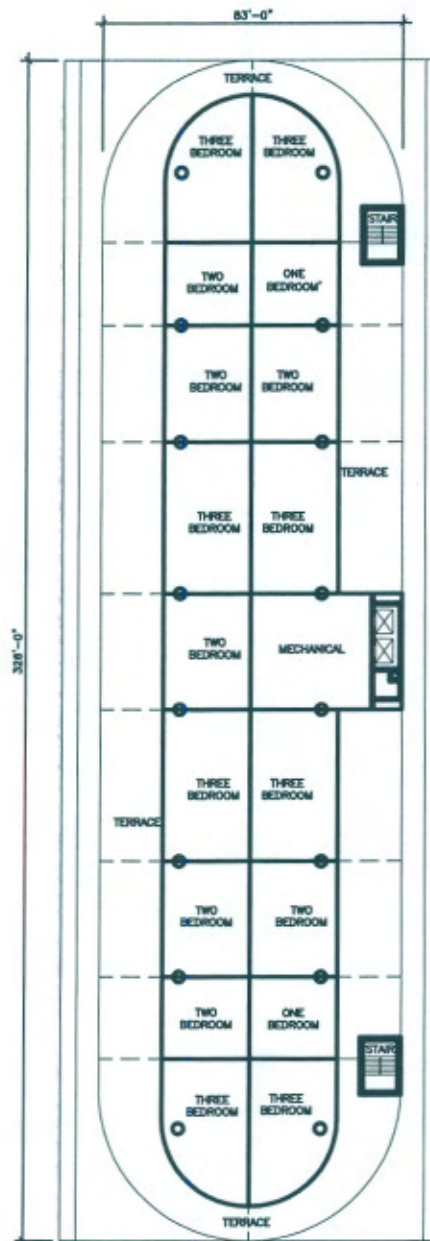
Legend

- YMCA Floor Area
- Library Floor Area

**PROPOSED RENOVATION TO:
CNR CENTRE: RESIDENCE INN & CONDOMINIUMS
STRATFORD, ONTARIO**

2006.03.23

G.M. DIEMERT ARCHITECT INC.

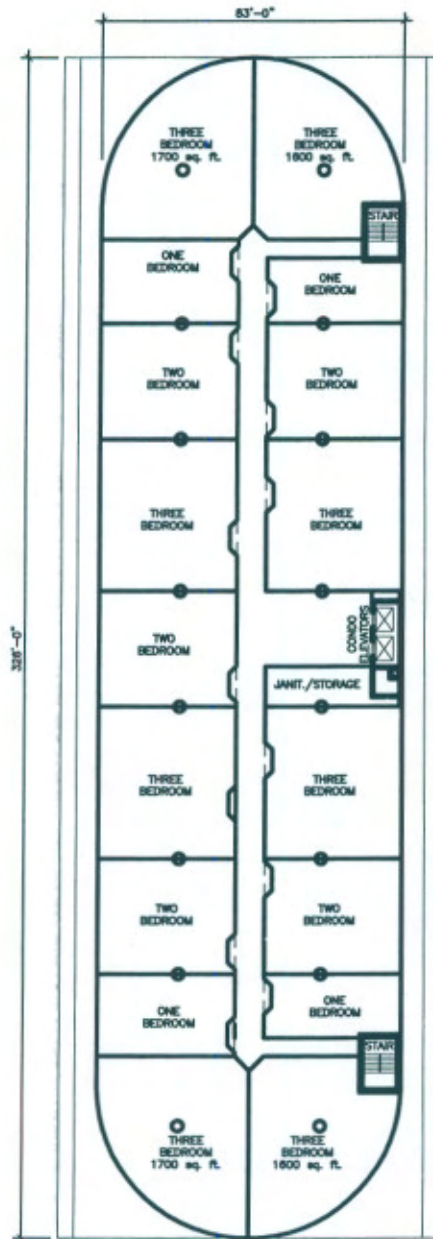


UPPER LEVEL PLAN OF CONDO PENTHOUSE

**PROPOSED RENOVATION TO:
 CNR CENTRE: RESIDENCE INN & CONDOMINIUMS
 STRATFORD, ONTARIO**

2006.03.23

G.M. DIEMERT ARCHITECT INC.



TYP. CONDO FLOOR PLAN

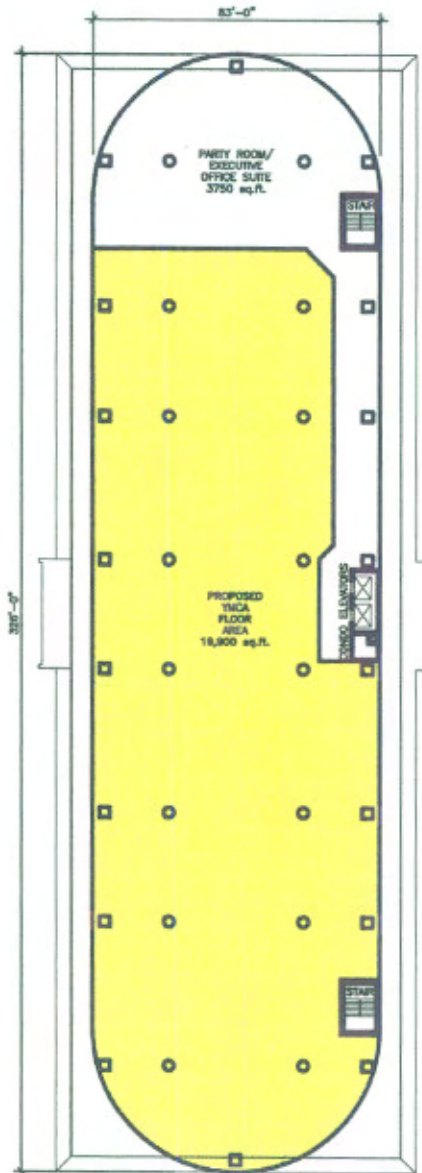
- 8 - 3 BEDROOMs
- 5 - 2 BEDROOMs
- 4 - 1 BEDROOM

17 - UNITS TOTAL/FLOOR

9 FLOORS @ 17 UNITS / FLOOR
 = 153 UNITS @ 1 SPACES/UNIT
 = 153 PARKING SPACES

**PROPOSED RENOVATION TO:
 CNR CENTRE: RESIDENCE INN & CONDOMINIUMS
 STRATFORD, ONTARIO
 2006.03.23**

G.M. DIEMERT ARCHITECT INC.



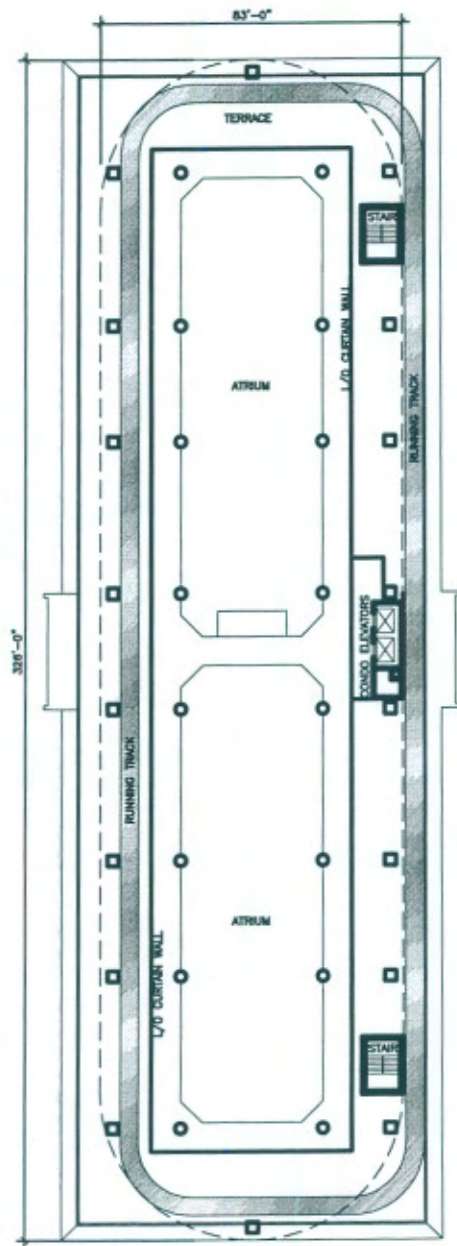
PROPOSED YMCA FLOOR

Legend

YMCA Floor Area

**PROPOSED RENOVATION TO:
 CNR CENTRE: RESIDENCE INN & CONDOMINIUMS
 STRATFORD, ONTARIO
 2006.03.23**

G.M. DIEMERT ARCHITECT INC.



UPPER ATRIUM LEVEL

**PROPOSED RENOVATION TO:
CNR CENTRE: RESIDENCE INN & CONDOMINIUMS
STRATFORD, ONTARIO
2006.03.23**

G.M. DIEMERT ARCHITECT INC.