

2ND FLOOR HOTEL PLAN

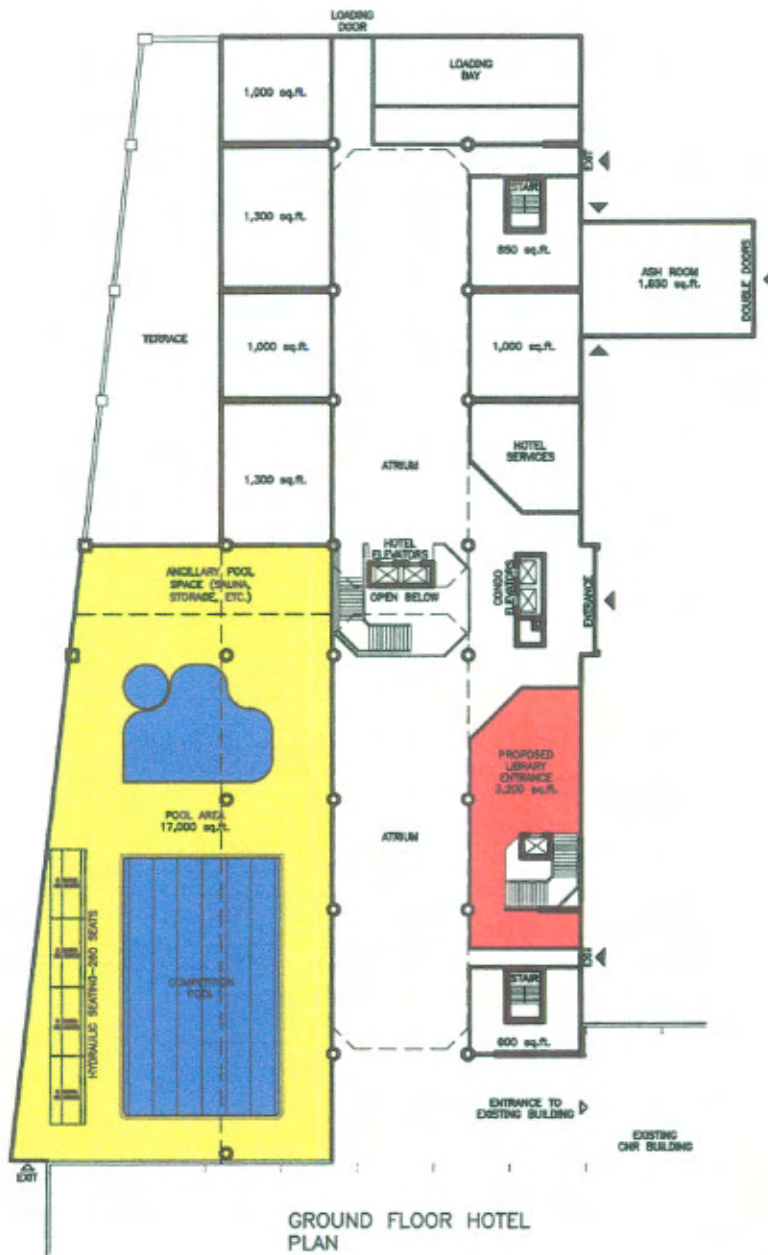
- 8 - 2 BEDROOMS
- 10 - 1 BEDROOMS
- 6 - STUDIOS

---

- 24 - UNITS TOTAL/FLOOR
- 3 FLOORS = 72 UNITS

**PROPOSED RENOVATION TO:  
 CNR CENTRE: RESIDENCE INN & CONDOMINIUMS  
 STRATFORD, ONTARIO  
 2006.03.23**

**G.M. DIEMERT ARCHITECT INC.**

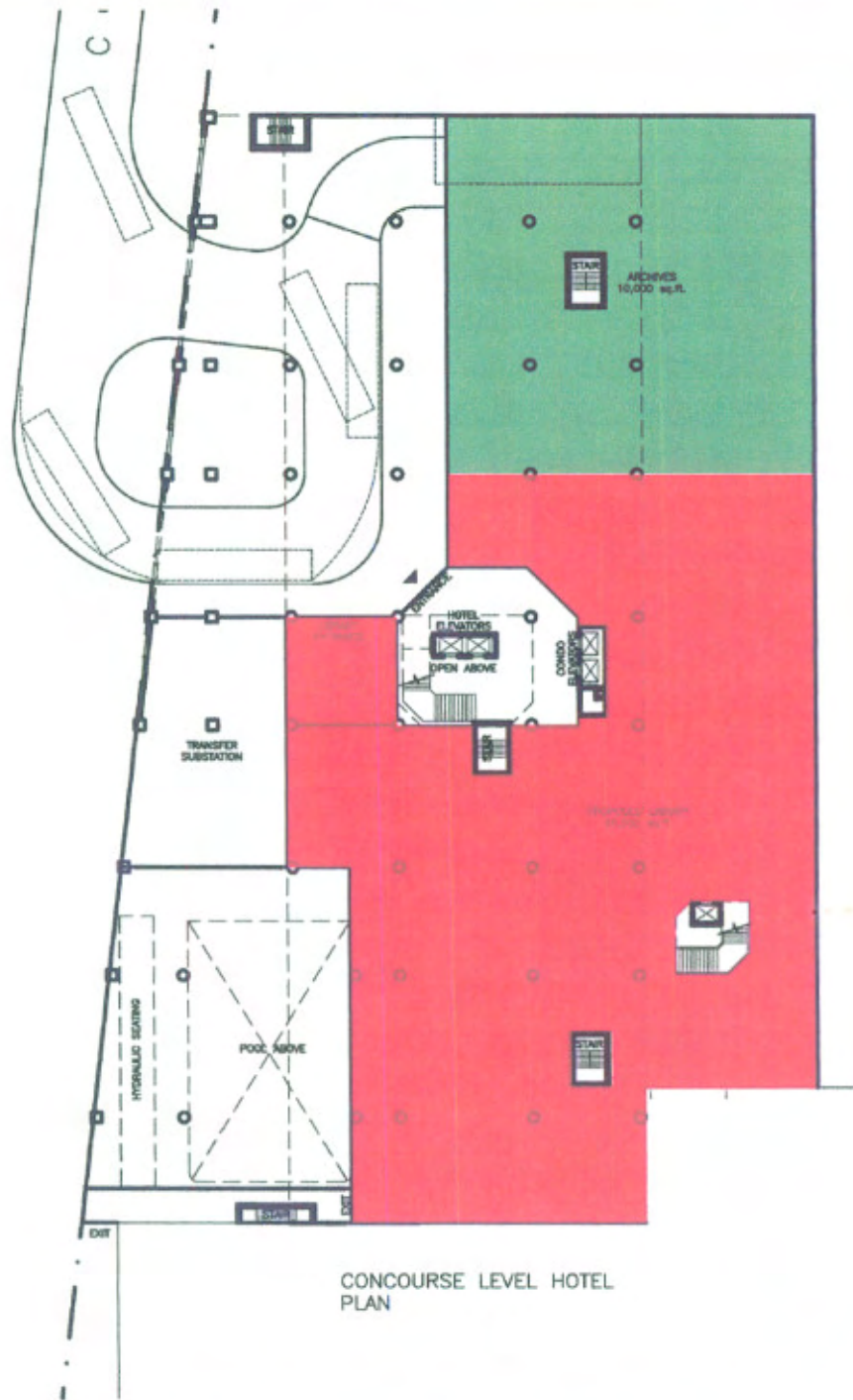


Legend

- YMCA Floor Area
- Library Floor Area

**PROPOSED RENOVATION TO:  
CNR CENTRE: RESIDENCE INN & CONDOMINIUMS  
STRATFORD, ONTARIO  
2006.03.23**

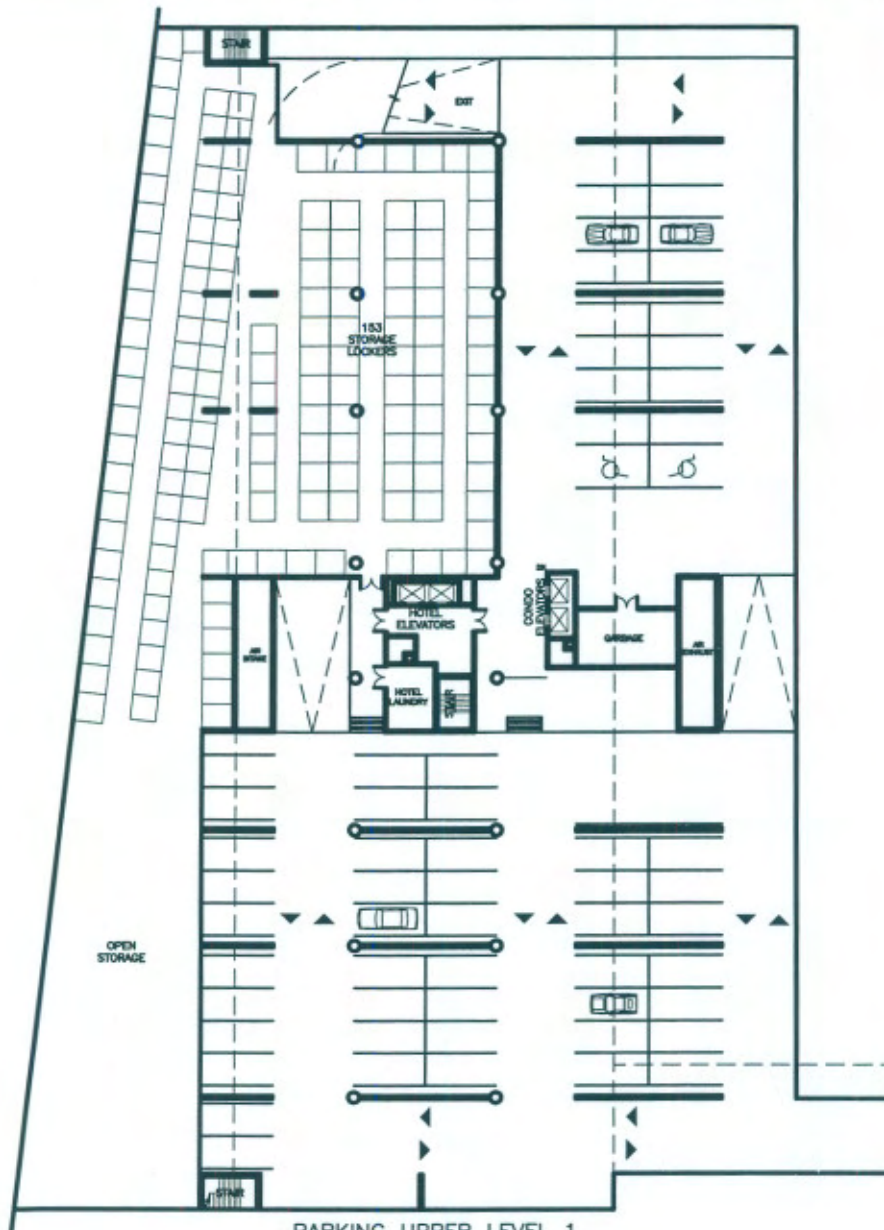
**G.M. DIEMERT ARCHITECT INC.**



**PROPOSED RENOVATION TO:  
 CNR CENTRE: RESIDENCE INN & CONDOMINIUMS  
 STRATFORD, ONTARIO  
 2006.03.23**

**G.M. DIEMERT ARCHITECT INC.**





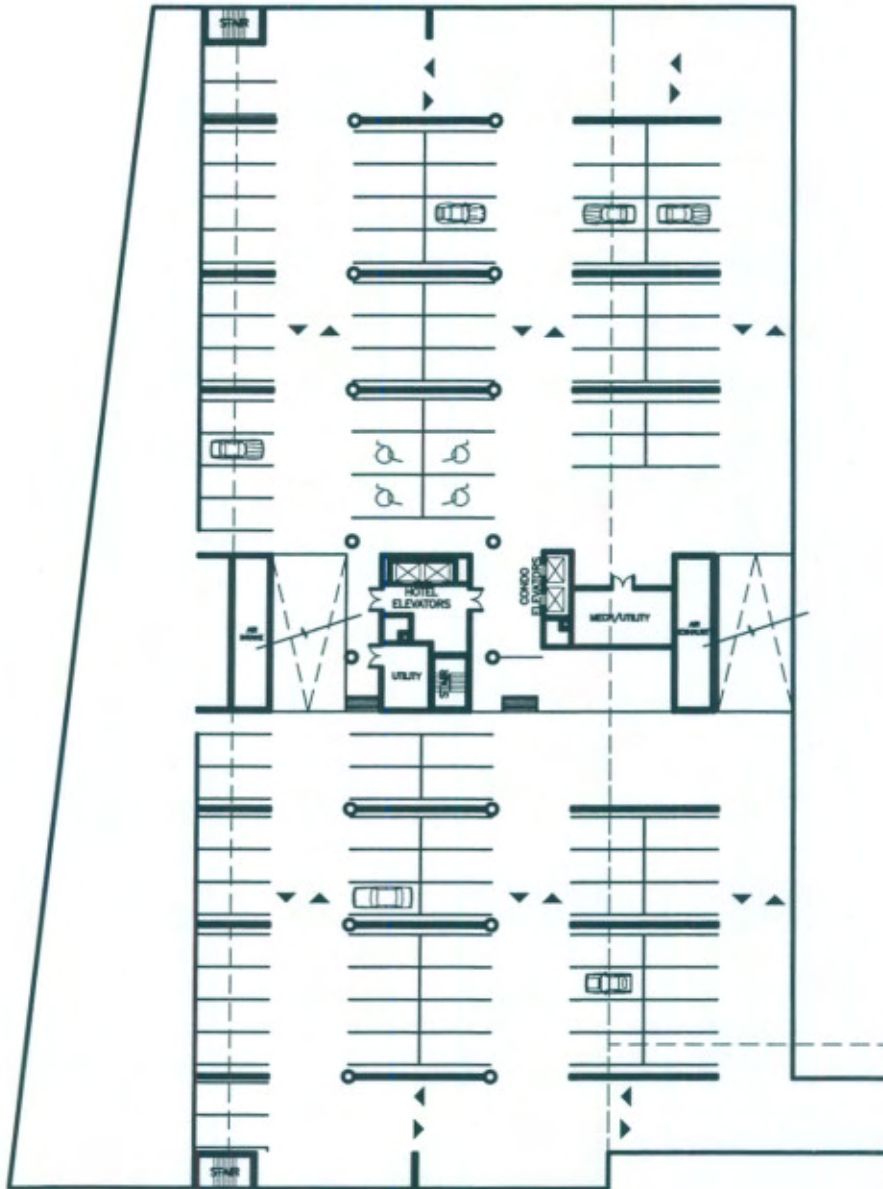
PARKING UPPER LEVEL 1  
61 PARKING SPACES

5 LEVELS OF PARKING = 431 SPACES.  
 153 CONDO UNITS @ 1 SPACE/UNIT  
 = 153 PARKING SPACES (CONDOS)  
 THUS, 431 - 153 (CONDOS) = 278 SPACES  
 = 72 HOTEL UNITS @ 1 SPACE/ROOM  
 THUS, 278 - 72 (HOTEL ROOMS) = 206

LEAVING 206 SPACES FOR PROPOSED LIBRARY/VISITORS.

**PROPOSED RENOVATION TO:  
 CNR CENTRE: RESIDENCE INN & CONDOMINIUMS  
 STRATFORD, ONTARIO  
 2006.03.23**

**G.M. DIEMERT ARCHITECT INC.**

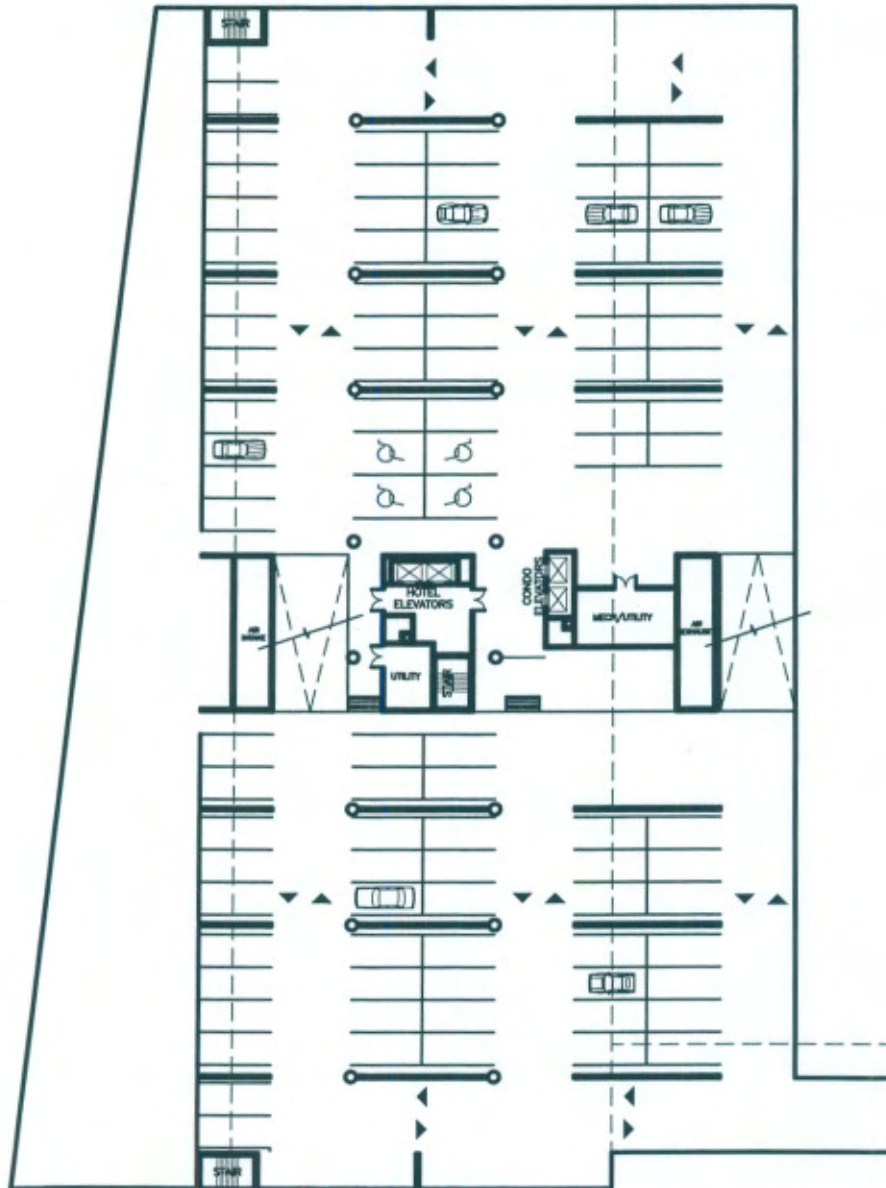


PARKING MID LEVEL 2  
94 PARKING SPACES

**PROPOSED RENOVATION TO:  
CNR CENTRE: RESIDENCE INN & CONDOMINIUMS  
STRATFORD, ONTARIO**

2006.03.23

**G.M. DIEMERT ARCHITECT INC.**

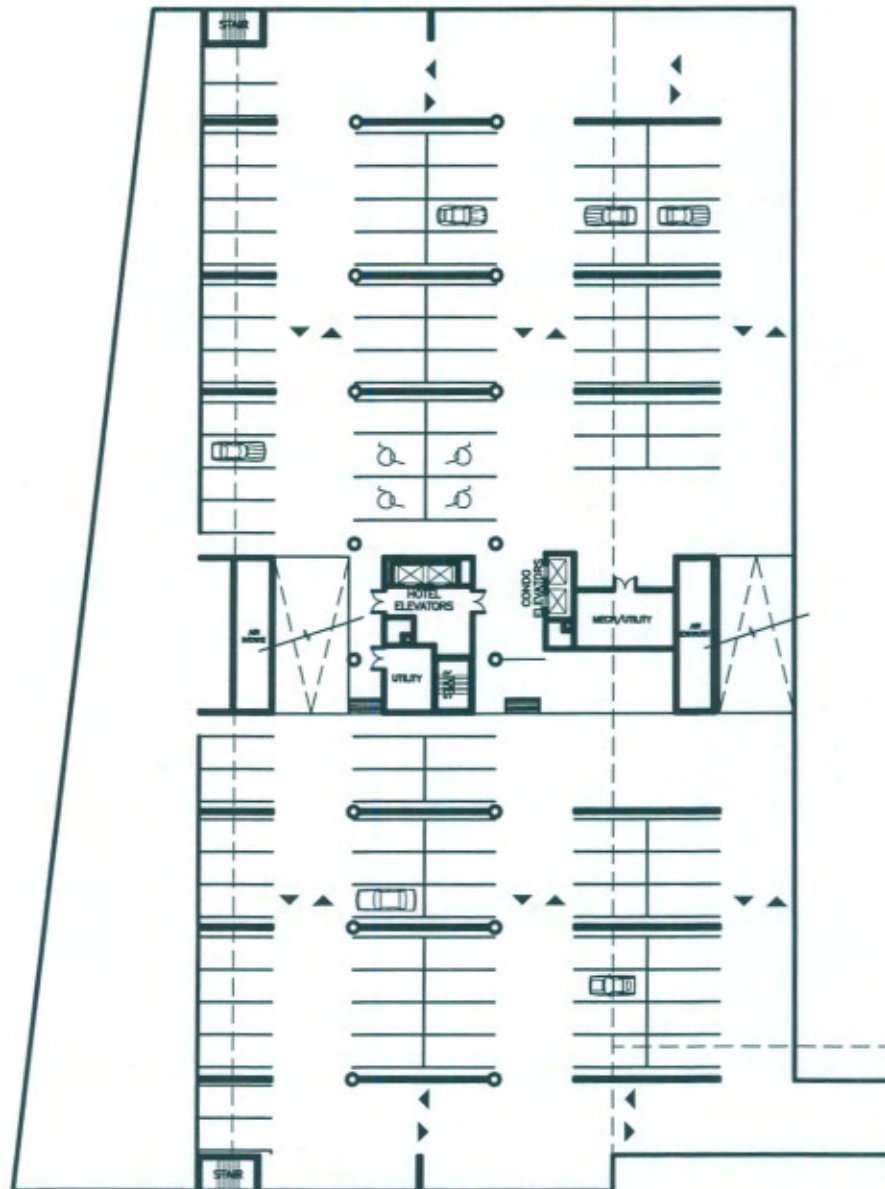


PARKING MID LEVEL 3  
94 PARKING SPACES

**PROPOSED RENOVATION TO:  
CNR CENTRE: RESIDENCE INN & CONDOMINIUMS  
STRATFORD, ONTARIO  
2006.03.23**

**G.M. DIEMERT ARCHITECT INC.**

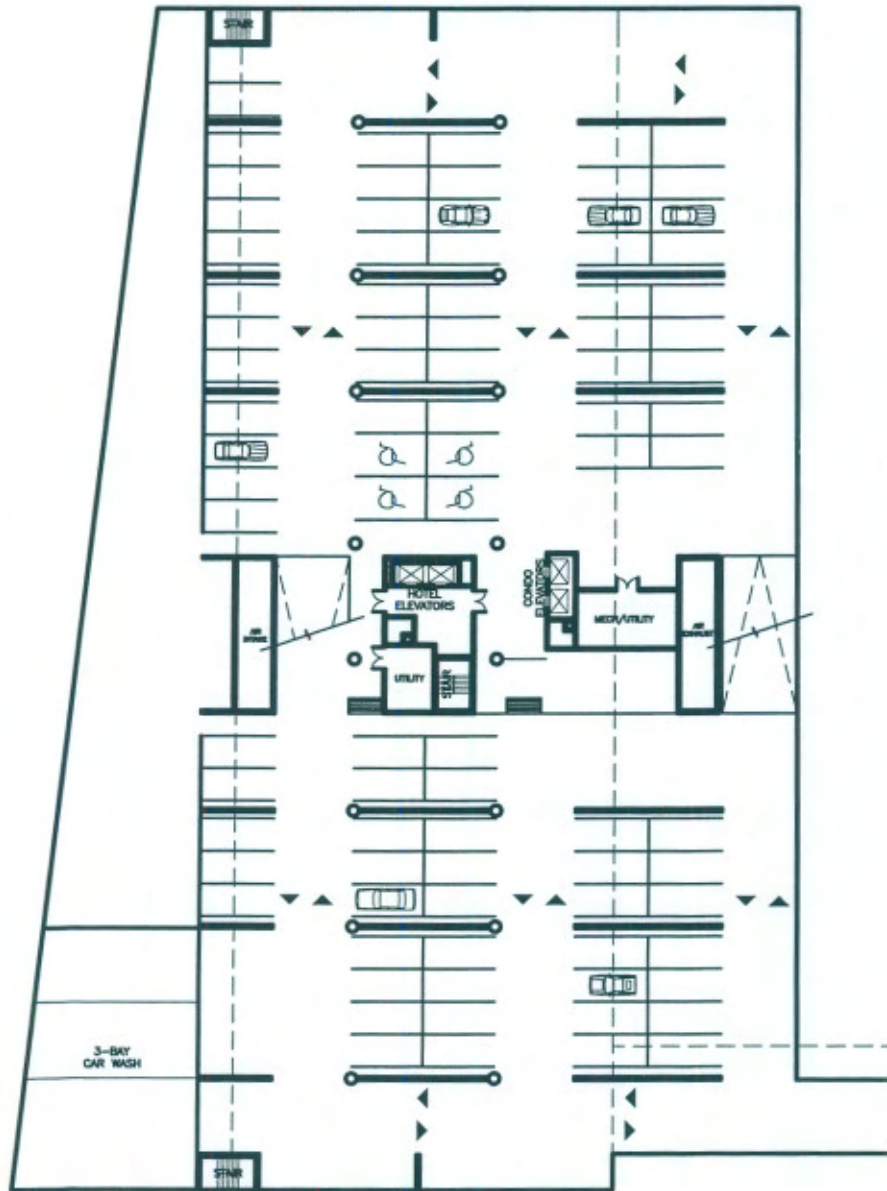




PARKING MID LEVEL 4  
94 PARKING SPACES

**PROPOSED RENOVATION TO:  
CNR CENTRE: RESIDENCE INN & CONDOMINIUMS  
STRATFORD, ONTARIO  
2006.03.23**

**G.M. DIEMERT ARCHITECT INC.**



PARKING LOWER LEVEL 5  
88 PARKING SPACES

**PROPOSED RENOVATION TO:  
CNR CENTRE: RESIDENCE INN & CONDOMINIUMS  
STRATFORD, ONTARIO**

2006.03.23

**G.M. DIEMERT ARCHITECT INC.**